

# MAKEOVER

Conversions and Extensions of Homes and Residential Spaces

Chris van Uffelen







Architect | Neil Dusheiko Architects  
 Completion | 2017  
 Original Building | Victorian  
 Gross floor area before | 130 m<sup>2</sup>  
 Gross floor area after | 172 m<sup>2</sup>  
 Number of Rooms before | 3  
 Number of Rooms after | 4  
 No. of Apartments | 1  
 No. of Residents: 5  
 Address | Hackney, London, England

This project involved upgrading a Victorian terrace house that was in need of modernization. The design adds a new light-filled extension on the ground floor level and a new loft bedroom and bathroom above, inserted into what was previously unused roof space. A large open-plan living space was created by opening up the front and rear reception rooms, providing ample display space for the client's extensive art collection. A fully glazed skylight has been fitted in the side extension and allows for increased light levels and improved connections between the spaces linking the front of the house to the rear garden. A new set of stairs runs across the full width of the house, marking the connection between the new and old rooms. Niches have been carved into the depth of the walls to provide storage space and room for sculptures to be displayed. A calm material palette of reclaimed bricks and oak flooring creates a warm ambience.

## GALLERY HOUSE

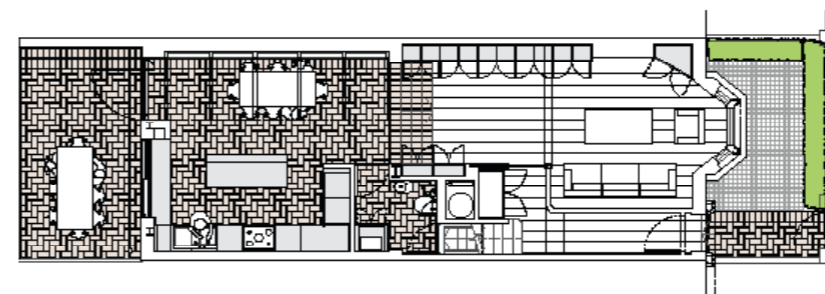
CHALLENGE: ADDING A GALLERY SPACE TO A VICTORIAN RESIDENCE TO PROVIDE SPACE FOR THE CLIENT'S COLLECTION OF ART AND TO ENHANCE THE VISUAL RELATIONSHIP WITH THE SURROUNDING ENVIRONMENT.



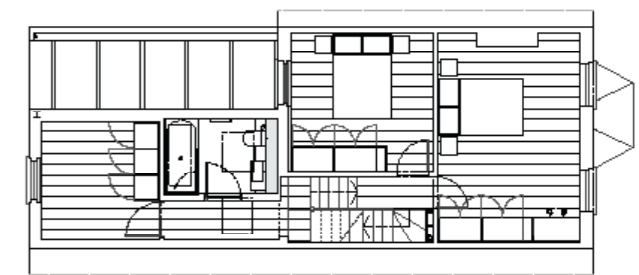




SOLUTION: EXTENDING THE GROUND FLOOR LEVEL TO BUILD UP A NEW GALLERY SPACE AND CREATE A DIRECT VISUAL CONNECTION TO THE NEARBY PARK THROUGH SWEEPING PANORAMIC VIEWS.



Ground floor



First floor